



Conservation Reserve Program

ANNUAL SUMMARY AND ENROLLMENT STATISTICS

FY 2020

Conservation Reserve Program

ANNUAL SUMMARY FISCAL YEAR 2020*

<u>Sign-up Type</u>	<u>Contracts</u>	<u>Farms</u>	<u>Acres</u>	<u>Annual Rental Payments a/ (\$Million)</u>	<u>(\$/Acre)</u>
General	164,056	118,533	13,180,476	\$684	\$51.93
Continuous					
Non-CREP	352,242	208,276	6,510,092	\$882	\$135.53
CREP	55,207	37,575	925,694	\$155	\$167.19
<u>Farmable Wetland</u>	<u>14,830</u>	<u>11,448</u>	<u>391,519</u>	<u>\$62</u>	<u>\$157.09</u>
<u>Total Continuous</u>	<u>422,205 b/</u>	<u>243,981 b/</u>	<u>7,827,305</u>	<u>\$1,098</u>	<u>\$140.32</u>
Grasslands	3,313	2,068	916,974	\$12	\$13.51
Total CRP	589,574 b/	334,211 b/	21,924,755	\$1,795	\$81.88

a/ Approximates October 2020 payments, before adjustments for haying/grazing, non-compliance, terminations, part-year contracts, and contracts not yet recorded.

b/ Number of farms and contracts not additive across signup types.

This report provides statistics for land enrolled in the Conservation Reserve Program (CRP), including a summary of FY 2020 CRP related activities, FY 2020 CRP outlays by payment type, CRP enrollment activity, outlay and sign-up history. The tables are based on contract data developed and maintained in CRP data files by Farm Service Agency (FSA) service centers and are generally based on the physical location of the CRP contracted land. FY 2020 ended September 30, 2020. The report was prepared by Alex Barbarika, Resource Economics Branch, Economic and Policy Analysis Division, Farm, Farm Production and Conservation Business Center, U.S. Department of Agriculture.

In accordance with Federal civil rights law and U.S. Department of Agriculture (USDA) civil rights regulations and policies, the USDA, its Agencies, offices, and employees, and institutions participating in or administering USDA programs are prohibited from discriminating based on race, color, national origin, religion, sex, gender identity (including gender expression), sexual orientation, disability, age, marital status, family/parental status, income derived from a public assistance program, political beliefs, or reprisal or retaliation for prior civil rights activity, in any program or activity conducted or funded by USDA (not all bases apply to all programs). Remedies and complaint filing deadlines vary by program or incident.

Persons with disabilities who require alternative means of communication for program information (e.g., Braille, large print, audiotope, American Sign Language, etc.) should contact the responsible Agency or USDA's TARGET Center at (202) 720-2600 (voice and TTY) or contact USDA through the Federal Relay Service at (800) 877-8339. Additionally, program information may be made available in languages other than English.

CONTENTS

CLEAR Enrollment by State and Practice	3
Performance Measures.....	5
Continuous Signup Enrollment Since Inception.....	6
Outlays, 2015-2020.....	6
Enrollment Activity and News.....	7
Wetland Restorations by State.....	8
Current Enrollment by Sign-up and Initial Contract Year	
Acres.....	9
Number of Contracts.....	10
Current Enrollment by State and Sign-up Type	
Total CRP	11
General Sign-up	12
Total Continuous	13
CREP (Continuous)	14
CREP by Agreement.....	15
Non-CREP (Continuous)	16
Farmable Wetland (Continuous).....	17
Grasslands.....	18
State Acres for Wildlife Enhancement (SAFE) Enrolled by State.....	19
Contract Expirations by Year.....	20
Conservation Practices Currently Installed by State.....	21
Conservation Practices Currently Installed, National	27
Enrollment and Outlay History.....	29

General Signup. Producers with eligible lands compete nationally for acceptance based on an environmental benefits index (EBI) during specified enrollment periods. Producers may submit offers below soil-specific maximum rental rates and select wildlife-enhancing vegetative covers to increase EBI ranking.

Continuous (Non-CREP) Sign-up. Producers with eligible lands may enroll certain high priority conservation practices, such as filter strips, riparian buffers, and wetlands at any time during the year without competition. In addition to annual soil rental payment and cost-share assistance, many practices are eligible for additional annual and one-time up-front financial incentives.

Conservation Reserve Enhancement Program (CREP). Under CREP agreements, Federal/State partnerships, implement projects designed to address specific environmental objectives through targeted CRP enrollments. Sign-up is held on a continuous basis, general sign-up practices may be included, and additional financial incentives are generally provided. State partners provide 20 percent of the costs.

Farmable Wetland Program (FWP). Producers enroll small non-flood plain wetlands, and new practices added by the 2008 Farm Bill, under modified continuous sign-up provisions.

Grasslands. Enrollments are to support grazing operations and to preserve and restore grasslands. No cropping history is required.

***CLEAN LAKES, ESTUARIES, AND RIVERS (CLEAR)
PRACTICES ENROLLED AS OF SEPTEMBER 2020***

Practice	Practice Code	Acres Added in FY 2020 /2	Acres as of September
Grass Waterways	CP-8	10,027	116,684
Contour Grass Strips	CP-15A	4,508	53,698
Contour Grass Strips in Terraces	CP-15B	0	2,678
Filter Strips (Grass)	CP-21	45,595	692,269
Filter Strips with Bioreactor	CP-21B	20	25
Filter Strips with Saturated Buffer	CP-21S	9	30
Riparian Buffers (Trees)	CP-22	32,916	584,623
Riparian Buffers with Bioreactor	CP-22B	9	88
Riparian Buffers with Saturated Buffer	CP-22S	16	16
Wetland Restoration 1/	CP-23	90,577	1,282,042
Wildlife Habitat Buffer on Marginal Pasture	CP-29	2,847	84,845
Wetland Buffer on Marginal Pasture	CP-30	3,359	32,743
Bottomland Timber Establishment	CP-31	1,689	152,818
Prairie Pothole Duck Nesting Habitat	CP-37	23,504	441,781
Prairie Strips	CP-43	1,907	1,907
SAFE Buffers	CP-38	0	1,760
SAFE Wetland	CP-38	0	21,698
Total CLEAR		216,982	3,469,704
Total Continuous			7,827,305
Percent CLEAR			44%

1/ Includes both floodplain and non-floodplain wetland restorations.

2/ Includes land approved in FY 2019 sign up with contracts that began in FY 2020.



CLEAR ENROLLMENT BY STATE AND PRACTICE - AS OF SEPTEMBER 2020

State	Grass Waterways	Contour Grass Strips	Contour Grass Strips on terraces	Filter-strips (Grass)	Riparian Buffers (Trees)	Wetland Restorations	Wildlife Habitat Buffers on Marg.Past.
	CP8	CP15A	CP15B	CP21	CP22	CP23,23A	CP29
ALABAMA	8	0	0	249	21,854	5	368
ALASKA	0	0	0	0	50	0	0
ARKANSAS	5	0	0	4,339	49,783	69,865	272
CALIFORNIA	0	0	0	0	268	572	0
COLORADO	357	9	0	60	418	1,550	58
CONNECTICUT	0	0	0	0	1	0	0
DELAWARE	1	0	0	416	57	186	0
GEORGIA	21	0	0	368	630	403	26
HAWAII	0	0	0	0	1,267	0	0
IDAHO	0	37	0	670	2,685	401	103
ILLINOIS	30,067	599	160	97,512	93,859	47,590	169
INDIANA	17,338	20	0	41,974	4,563	12,988	88
IOWA	34,330	9,284	186	179,478	39,536	132,153	4,699
KANSAS	6,563	501	1,885	17,966	2,108	9,197	0
KENTUCKY	4,992	30	0	15,218	13,414	220	46,324
LOUISIANA	2	0	0	260	3,472	137,940	0
MAINE	43	0	0	55	29	0	5
MARYLAND	197	1	0	21,765	10,110	2,248	1,038
MASSACHUSETTS	0	0	0	10	0	0	0
MICHIGAN	384	0	0	21,015	1,362	17,598	4
MINNESOTA	3,141	686	18	108,335	22,795	377,379	140
MISSISSIPPI	20	17	0	4,203	151,391	22,210	33
MISSOURI	1,691	480	51	20,508	18,638	20,567	775
MONTANA	58	0	0	177	1,818	1,826	0
NEBRASKA	1,070	67	163	12,766	1,275	14,421	547
NEW HAMPSHIRE	0	0	0	0	4	0	0
NEW JERSEY	173	1	0	309	272	0	0
NEW MEXICO	0	0	0	0	560	0	0
NEW YORK	26	0	0	244	6,074	60	1,330
NORTH CAROLINA	193	0	0	651	3,147	677	24
NORTH DAKOTA	74	1	0	7,032	223	194,869	35
OHIO	11,350	13	0	66,668	6,509	12,970	2,907
OKLAHOMA	124	0	0	462	792	1,681	0
OREGON	16	0	0	1,446	30,496	268	16,205
PENNSYLVANIA	180	28	0	656	17,574	573	974
PUERTO RICO	0	60	0	0	94	0	341
RHODE ISLAND	0	0	0	0	28	0	0
SOUTH CAROLINA	14	0	0	869	8,248	172	28
SOUTH DAKOTA	1,345	25	0	9,358	4,074	186,801	3,788
TENNESSEE	171	0	20	3,778	4,386	673	71
TEXAS	1,073	15	56	544	11,328	8,901	1,165
UTAH	6	0	18	0	17	0	0
VERMONT	15	0	0	120	2,137	0	0
VIRGINIA	73	2	0	2,110	17,155	141	719
WASHINGTON	321	41,428	113	31,167	17,571	62	695
WEST VIRGINIA	0	0	0	563	4,860	0	0
WISCONSIN	1,241	395	6	18,948	5,971	4,877	807
WYOMING	0	0	0	0	1,719	0	1,107
	=====	=====	=====	=====	=====	=====	=====
	116,684	53,698	2,678	692,269	584,623	1,282,042	84,845

CLEAR ENROLLMENT BY STATE AND PRACTICE - AS OF SEPTEMBER 2020, CON'T

State	Wetland Buffers on Marg.Past.	Bottomland Hardwood Trees	Duck Nesting Habitat	Prairie Strips	SAFE Buffers	SAFE Wetland	Total
	CP30	CP31	CP37	CP43	CP38	CP38	
ALABAMA	0	1,058	0	0	0	0	23,542
ALASKA	140	0	0	0	0	0	190
ARKANSAS	2,706	16,964	0	0	0	4,132	148,072
CALIFORNIA	0	0	0	0	0	0	839
COLORADO	32	0	0	0	0	0	2,483
CONNECTICUT	0	0	0	0	0	0	1
DELAWARE	0	0	0	0	0	0	660
GEORGIA	0	0	0	0	0	0	1,447
HAWAII	0	0	0	0	0	0	1,267
IDAHO	53	0	0	0	998	0	4,947
ILLINOIS	20	5,718	0	279	0	283	276,274
INDIANA	41	9,639	0	89	0	714	87,453
IOWA	1,139	3,562	2,518	1,275	0	902	409,072
KANSAS	0	207	0	86	0	9,049	47,568
KENTUCKY	0	594	0	0	0	119	80,913
LOUISIANA	176	49,285	0	0	0	261	191,415
MAINE	11	0	0	0	0	0	144
MARYLAND	154	0	0	0	0	0	35,514
MASSACHUSETTS	0	0	0	0	0	0	10
MICHIGAN	224	0	0	3	156	375	41,122
MINNESOTA	4,951	836	24,610	85	0	0	542,985
MISSISSIPPI	37	59,596	0	0	0	110	237,618
MISSOURI	1,443	1,933	0	0	4	0	66,112
MONTANA	1	0	2,871	0	0	555	7,307
NEBRASKA	285	9	0	67	0	1,172	31,844
NEW HAMPSHIRE	0	0	0	0	0	0	4
NEW JERSEY	0	0	0	0	0	4	759
NEW MEXICO	0	0	0	0	0	0	560
NEW YORK	1,142	2	0	0	0	0	8,879
NORTH CAROLINA	0	55	0	0	0	0	4,747
NORTH DAKOTA	0	0	177,752	0	0	2,869	382,855
OHIO	106	39	0	1	0	78	100,642
OKLAHOMA	0	442	0	0	0	0	3,501
OREGON	529	0	0	0	0	0	48,960
PENNSYLVANIA	420	0	0	0	0	0	20,404
PUERTO RICO	0	0	0	0	0	0	495
RHODE ISLAND	0	0	0	0	0	0	28
SOUTH CAROLINA	59	0	0	0	0	0	9,397
SOUTH DAKOTA	18,509	0	234,029	19	0	902	458,864
TENNESSEE	0	2,878	0	0	0	96	12,073
TEXAS	2	0	0	0	0	0	23,083
UTAH	0	0	0	0	0	0	41
VERMONT	1	0	0	0	0	0	2,273
VIRGINIA	0	0	0	0	0	0	20,199
WASHINGTON	538	0	0	0	601	0	92,543
WEST VIRGINIA	0	0	0	0	0	0	5,424
WISCONSIN	22	0	0	3	0	77	32,346
WYOMING	0	0	0	0	0	0	2,826
	=====	=====	=====	=====	=====	=====	=====
	32,743	152,818	441,781	1,907	1,760	21,698	3,469,704

PERFORMANCE MEASURES SEPTEMBER 30, 2020 *

STATE	BUFFERS	WETLAND	FY 2020 CONTRACTS 1/	
			BUFFERS	WETLAND
ALABAMA	22,471	1,184	1,136	546
ALASKA	50	140	.	.
ARKANSAS	54,394	96,139	5,182	8,364
CALIFORNIA	268	572	.	.
COLORADO	535	1,754	0	0
CONNECTICUT	1	0	.	.
DELAWARE	472	378	48	17
FLORIDA	0	0	0	0
GEORGIA	1,023	416	101	4
HAWAII	1,267	0	7	0
IDAHO	4,457	482	87	0
ILLINOIS	191,540	59,375	9,521	6,913
INDIANA	46,625	24,988	4,072	2,566
IOWA	223,714	244,271	16,430	19,779
KANSAS	20,075	21,427	1,007	931
KENTUCKY	74,956	2,661	2,113	612
LOUISIANA	3,731	191,661	329	26,723
MAINE	89	11	.	.
MARYLAND	32,913	3,351	1,100	251
MASSACHUSETTS	10	0	.	.
MICHIGAN	22,537	19,392	642	1,278
MINNESOTA	131,270	446,998	6,120	32,880
MISSISSIPPI	155,627	93,782	9,789	3,100
MISSOURI	39,925	25,789	1,468	2,363
MONTANA	1,995	5,572	0	104
NEBRASKA	14,589	19,088	885	1,434
NEVADA	0	0	.	.
NEW HAMPSHIRE	4	0	.	.
NEW JERSEY	581	4	94	0
NEW MEXICO	560	0	.	.
NEW YORK	7,648	1,205	241	144
NORTH CAROLINA	3,821	937	64	2
NORTH DAKOTA	7,290	510,031	279	21,286
OHIO	76,084	13,987	8,745	821
OKLAHOMA	1,254	2,345	115	0
OREGON	48,147	797	5,483	81
PENNSYLVANIA	19,204	1,023	1,285	61
PUERTO RICO	435	0	.	.
RHODE ISLAND	28	0	.	.
SOUTH CAROLINA	9,145	241	154	11
SOUTH DAKOTA	17,221	537,957	1,892	50,225
TENNESSEE	8,235	3,704	452	946
TEXAS	13,037	8,986	1,344	440
UTAH	17	0	.	.
VERMONT	2,257	1	77	0
VIRGINIA	19,983	193	604	0
WASHINGTON	50,035	660	934	8
WEST VIRGINIA	5,424	0	250	0
WISCONSIN	25,726	6,685	2,320	317
WYOMING	2,826	0	233	0
	=====	=====	=====	=====
	1,363,497	2,348,186	84,603	182,207

* Includes CREP, FWP, and SAFE. Acres not counted until initial contract year. These include contracts approved during the FY 2019 signup that started in FY 2020 It does not include contracts do not start until FY 2021.
 1/ Includes both new and re-enrolled lands.

Buffers: CP21,CP22,CP29, and CP38 buffers.

Wetland: CP9,CP23,CP23A,CP30,CP31,CP37,CP38 wetland, and Farmable Wetland Program. Includes both wetland and associated upland buffers.

**CONTINUOUS CRP ENROLLMENT SINCE INCEPTION
THROUGH SEPTEMBER 2020 ***

Sign-up	Non-CREP	CREP	FWP	Total
1997 (#14)	554,842	0	0	554,842
1998 (#17)	198,191	13,558	0	211,749
1999 (#19)	217,063	44,301	0	261,364
2000 (#21/22)	251,883	65,036	0	316,919
2001 (#23)	291,680	139,543	25,852	457,075
2002 (#24)	226,841	163,784	44,612	435,237
2003 (#25/27)	293,532	118,264	26,966	438,762
2004 (#28)	166,868	66,945	20,557	254,370
2005 (#30)	227,228	151,515	18,907	397,650
2006 (#31)	199,335	128,647	22,629	350,611
2007 (#35)	380,703	142,844	16,005	539,552
2008 (#36)	275,215	116,617	8,715	400,547
2009 (#37)	413,481	41,487	17,766	472,734
2010 (#38)	506,313	63,577	55,663	625,553
2011 (#40)	383,022	67,939	45,048	496,009
2012 (#42)	511,915	62,088	53,543	627,545
2013 (#44)	477,401	49,702	7,691	534,793
2014 (#46)	485,684	32,829	12,216	530,729
2015 (#47)	800,368	40,343	31,743	872,454
2016 (#48)	1,216,176	53,583	78,993	1,348,752
2017 (#50)	1,259,973	53,112	37,461	1,350,546
2018 (#51)	212,285	59,576	20,629	292,490
2019 (#52)	175,306	51,301	18,157	244,764
2020 (#53)	305,154	90,002	30,621	425,777
Expirations 1/	-3,241,850	-803,135	-172,833	-4,217,818
Current Enrollment	6,788,609	1,013,458	420,941	8,223,008

1/ Contracts that exited 2007-2010 and were not re-enrolled or that dropped out before normal contract termination.

*Includes contracts approved but not yet started.

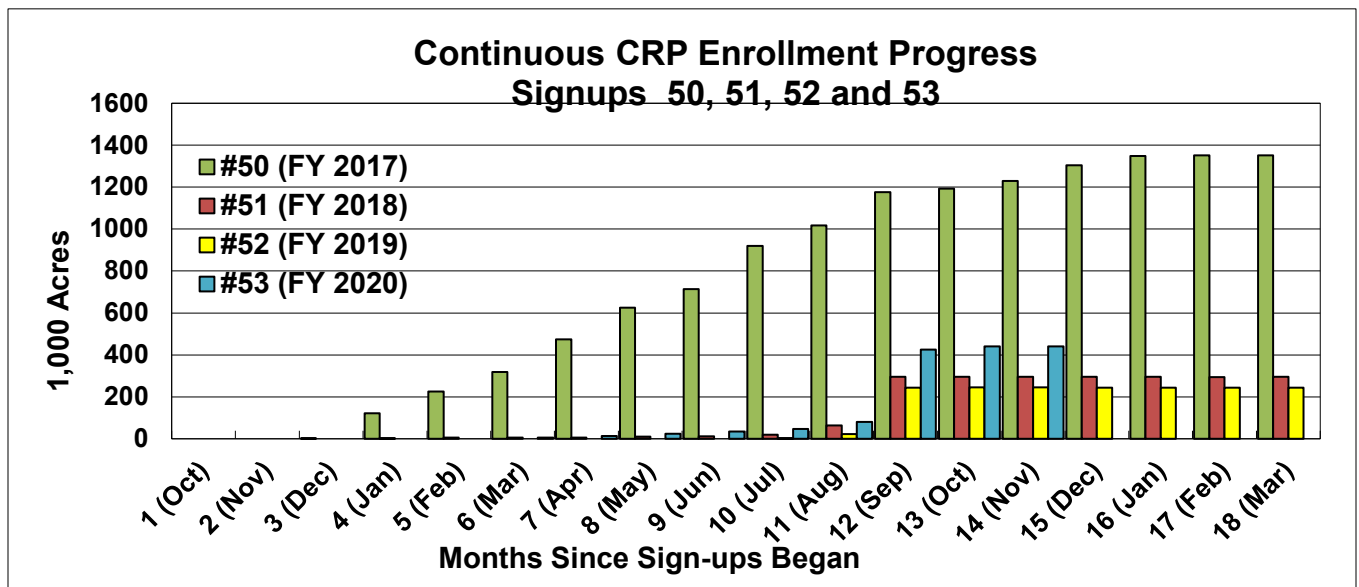
Conservation Reserve Program Outlays (\$1,000)

Payment	FY 2015	FY 2016	FY 2017	FY 2018	FY 2019	FY 2020
Annual Rental	1,593,635	1,580,641	1,667,692	1,778,179	1,842,245	1,796,321
Haying/Grazing Adj.	(2,792)	(4,013)	(2,884)	(2,920)	(3,138)	(3,747)
Cost-Share	68,799	105,957	111,781	107,145	52,484	35,970
Incentives 1/	51,080	133,650	84,300	56,330	22,595	12,093
Transitions Incentive	2,792	4,193	6,104	3,745	3,980	3,922
Tree Thinning	0	235	295	855	617	510
Total Financial Assistance	1,713,514	1,820,428	1,867,288	1,943,334	1,900,783	1,808,414

1/ Signing and Practice Incentives.

**CONSERVATION RESERVE PROGRAM
ENROLLMENT ACTIVITY AND NEWS –FY 2020**

- Enrollment ends September at 21.9 million acres.
- For non-CREP continuous, the Practice Incentive Payment (PIP) was set at 5% for FY 2020..
- On July 9, USDA announced that 1.2 million acres were approved for enrollment in CRP Grasslands signup 202.
- Under general signup 54, of the 3.8 million acres offered, 3.4 million acres were approved for enrollment. Contracts for this signup start in FY 2021.
- On February 27, the Secretary announced the signup for the Soil Health and Income Protection Pilot Program (SHIPP) which was open March 30 through August 21. The signup was later extended to November 20, 2020. Final data for this program have not yet been released.
- On April 29, the new pilot program CLEAR 30 signup was announced. Signup was open July 8 through August 21. It was available to producers with expiring CLEAR eligible (water quality) contract practices in the Chesapeake Bay and Great Lakes states. Contracts will be for 30 years.
- On September 30, updated soil rental rates for FY 2021 were shared with states, counties, and CREP partners for review. The new rates became effective on December 1.



**CONSERVATION RESERVE PROGRAM WETLAND RESTORATIONS 1/
CUMULATIVE ACRES AS OF SEPTEMBER 2020**

STATE	GENERAL 2/ (CP23)	FLOOD- PLAIN (CP23)	NON FLOODPLAIN (CP23A)	FARMABLE WETLAND 3/ (CP31)	BOTTOMLAND HARDWOODS (CP31)	DUCK NESTING (CP37)	OTHER WETLAND 4/ (CP37)	TOTAL
ALABAMA	0	5	0	14	1,058	0	107	1,184
ALASKA	0	0	0	0	0	0	140	140
ARKANSAS	22	43,522	26,321	2,012	16,964	0	7,298	96,139
CALIFORNIA	572	0	0	0	0	0	0	572
COLORADO	26	0	1,524	160	0	0	44	1,754
CONNECTICUT	0	0	0	0	0	0	0	0
DELAWARE	0	112	74	0	0	0	191	378
FLORIDA	0	0	0	0	0	0	0	0
GEORGIA	380	23	0	0	0	0	13	416
HAWAII	0	0	0	0	0	0	0	0
IDAHO	0	375	25	6	0	0	76	482
ILLINOIS	702	34,855	12,033	1,818	5,718	0	4,248	59,375
INDIANA	943	3,917	8,128	752	9,639	0	1,609	24,988
IOWA	2,221	119,046	10,887	94,041	3,562	2,518	11,998	244,271
KANSAS	378	3,649	5,170	2,114	207	0	9,909	21,427
KENTUCKY	0	82	137	0	594	0	1,847	2,661
LOUISIANA	101	67,048	70,791	3,556	49,285	0	880	191,661
MAINE	0	0	0	0	0	0	11	11
MARYLAND	9	1,900	339	0	0	0	1,103	3,351
MASSACHUSETTS	0	0	0	0	0	0	0	0
MICHIGAN	204	3,874	13,520	64	0	0	1,730	19,392
MINNESOTA	26,644	29,174	321,561	39,087	836	24,610	5,086	446,998
MISSISSIPPI	0	20,853	1,356	11,379	59,596	0	597	93,782
MISSOURI	83	18,930	1,554	222	1,933	0	3,067	25,789
MONTANA	510	655	661	306	0	2,871	568	5,572
NEBRASKA	158	9,332	4,932	3,075	9	0	1,583	19,088
NEVADA	0	0	0	0	0	0	0	0
NEW HAMPSHIRE	0	0	0	0	0	0	0	0
NEW JERSEY	0	0	0	0	0	0	4	4
NEW MEXICO	0	0	0	0	0	0	0	0
NEW YORK	2	55	3	0	2	0	1,143	1,205
NORTH CAROLINA	0	677	0	58	55	0	147	937
NORTH DAKOTA	130,573	4,568	59,728	134,541	0	177,752	2,869	510,031
OHIO	803	4,915	7,252	341	39	0	637	13,987
OKLAHOMA	78	293	1,310	169	442	0	53	2,345
OREGON	0	152	115	0	0	0	529	797
PENNSYLVANIA	0	573	0	0	0	0	450	1,023
PUERTO RICO	0	0	0	0	0	0	0	0
RHODE ISLAND	0	0	0	0	0	0	0	0
SOUTH CAROLINA	0	172	0	0	0	0	69	241
SOUTH DAKOTA	24,328	36,682	125,790	97,675	0	234,029	19,452	537,957
TENNESSEE	43	631	0	0	2,878	0	152	3,704
TEXAS	5,332	959	2,610	0	0	0	86	8,986
UTAH	0	0	0	0	0	0	0	0
VERMONT	0	0	0	0	0	0	1	1
VIRGINIA	0	141	0	0	0	0	52	193
WASHINGTON	15	42	5	10	0	0	588	660
WEST VIRGINIA	0	0	0	0	0	0	0	0
WISCONSIN	830	2,816	1,231	119	0	0	1,689	6,685
WYOMING	0	0	0	0	0	0	0	0
	=====	=====	=====	=====	=====	=====	=====	=====
	194,955	410,029	677,057	391,519	152,818	441,781	80,026	2,348,186

1/ Includes wetland and adjacent upland buffer acres and land enrolled in CREPs.

2/ Includes general signup and CREP before 2003, when CP23 was enrolled under general signup.

3/ CP27, CP28, CP39, CP40, CP41.

4/ CP9, CP30, and CP38 (SAFE) wetland.

**CRP ENROLLMENT AS OF SEPTEMBER 2020
BY SIGN-UP AND INITIAL CONTRACT YEAR 1/
ACRES**

SIGNUP	BEFORE 2012	2012	2013	2014	2015	2016	2017	2018	2019	2020	TOTAL
29	259,175	259,175
30	135,219	135,219
31	206,723	206,723
32	1,376,957	1,376,957
33	179,295	179,295
35	217,067	217,067
36	237,661	237,661
37	276,970	.	69	277,038
38	582,413	582,413
39	3,616,087	3,616,087
40	168,743	303,866	472,609
41	.	2,452,244	2,452,244
42	.	114,151	479,078	593,229
43	.	.	3,397,544	3,397,544
44	.	.	22,728	495,166	517,894
45	.	.	.	1,517,360	1,517,360
46	.	.	.	3,215	513,902	517,117
47	171,565	685,911	857,475
48	510,403	809,203	7,407	.	.	1,327,013
49	381,813	.	.	.	381,813
50	30,637	1,291,587	1,016	.	1,323,239
51	10,975	279,126	.	290,101
52	398	242,035	242,433
53	30,074	30,074
200	464	87,695	447,341	40	.	535,540
201	381,434	.	381,434
	=====	=====	=====	=====	=====	=====	=====	=====	=====	=====	=====
	7,256,310	2,870,261	3,899,419	2,015,741	685,466	1,196,778	1,309,348	1,757,310	662,013	272,110	21,924,755

1/ For CRP, contract year is the same as fiscal year, which begins October 1.

General Sign-up Numbers: 1-13, 15, 16, 18, 20, 26, 29, 33, 39, 41, 43, 45, 49.

Continuous Sign-up Numbers: 14, 17, 19, 21-25, 27, 28, 30, 31, 35, 36, 37, 38, 40, 42, 44, 46, 47, 48, 50, 51, 52, 53.

Sign-up number 32 reflects re-enrollment of 2007-2010 expiring general sign-up contracts under 2006's early re-enrollment and extension offer (REX).

Sign-up number 34 is reserved for Emergency Forestry CRP. Sign-ups 200 and 201 are CRP Grasslands.

CRP ENROLLMENT AS OF SEPTEMBER 2020
BY SIGN-UP AND INITIAL CONTRACT YEAR 1/
NUMBER OF CONTRACTS

SIGNUP	BEFORE 2012	2012	2013	2014	2015	2016	2017	2018	2019	2020	TOTAL
29	5,043	5,043
30	6,397	6,397
31	13,485	13,485
32	22,231	22,231
33	4,050	4,050
35	13,625	13,625
36	13,657	13,657
37	13,311	.	1	13,312
38	32,173	32,173
39	40,268	40,268
40	10,322	20,366	30,688
41	.	26,923	26,923
42	.	7,140	27,302	34,442
43	.	.	38,152	38,152
44	.	.	923	28,254	29,177
45	.	.	.	22,775	22,775
46	.	.	.	217	26,045	26,262
47	8,553	38,904	47,457
48	21,428	44,595	120	.	.	66,143
49	4,614	.	.	.	4,614
50	1,742	51,721	16	.	53,479
51	766	18,050	.	18,816
52	79	20,157	20,236
53	2,856	2,856
200	5	296	2,080	1	.	2,382
201	931	.	931
	=====	=====	=====	=====	=====	=====	=====	=====	=====	=====	=====
	174,562	54,429	66,378	51,246	34,598	60,337	51,247	54,687	19,077	23,013	589,574

1/ For CRP, contract year is the same as fiscal year, which begins October 1.
 General Sign-up Numbers: 1-13, 15, 16, 18, 20, 26, 29, 33, 39, 41, 43, 45, 49.
 Continuous Sign-up Numbers: 14, 17, 19, 21-25, 27, 28, 30, 31, 35, 36, 37, 38, 40, 42, 44, 46, 47, 48, 50, 51, 52, and 53.
 Sign-up number 32 reflects re-enrollment of 2007-2010 expiring general sign-up contracts under 2006's early re-enrollment and extension offer (REX).
 Sign-up number 34 is reserved for Emergency Forestry CRP. Sign-ups 200 and 201 are CRP Grasslands.

CRP ENROLLMENT BY STATE AS OF SEPTEMBER 2020
-----TOTAL CRP (ALL SIGNUPS)-----

STATE 1/	NUMBER OF CONTRACTS	NUMBER OF FARMS	ACRES	ANNUAL RENTAL PAYMENTS 2/ (\$1,000)	(\$/ACRE)
U. S.	589,574	334,211	21,924,755	1,795,204	81.88
ALABAMA	4,724	3,548	194,707	8,910	45.76
ALASKA	12	11	2,549	98	38.34
ARKANSAS	5,127	3,013	215,237	16,781	77.96
CALIFORNIA	159	118	42,426	2,233	52.64
COLORADO	9,876	5,402	1,830,455	63,820	34.87
CONNECTICUT	*	*	*	*	*
DELAWARE	298	180	3,570	502	140.69
FLORIDA	519	433	20,067	965	48.08
GEORGIA	6,288	4,346	206,674	13,263	64.17
HAWAII	31	20	1,280	62	48.58
IDAHO	3,522	2,008	534,443	28,209	52.78
ILLINOIS	75,201	42,474	841,743	166,042	197.26
INDIANA	32,097	18,261	213,638	40,177	188.06
IOWA	105,159	53,577	1,705,188	382,480	224.30
KANSAS	33,609	20,018	1,896,004	83,718	44.16
KENTUCKY	11,905	6,252	197,865	31,586	159.63
LOUISIANA	4,439	2,920	272,117	24,895	91.49
MAINE	238	163	5,638	265	47.01
MARYLAND	4,714	2,741	48,592	10,721	220.62
MASSACHUSETTS	3	3	10	1	101.00
MICHIGAN	8,819	5,226	115,247	15,213	132.00
MINNESOTA	54,522	28,871	1,025,150	136,545	133.19
MISSISSIPPI	14,199	9,382	589,310	44,304	75.18
MISSOURI	25,970	15,776	825,770	98,645	119.46
MONTANA	5,996	2,743	1,019,923	31,236	30.63
NEBRASKA	19,405	11,548	1,054,081	71,216	67.56
NEVADA	*	*	*	*	*
NEW HAMPSHIRE	*	*	*	*	*
NEW JERSEY	340	201	1,859	171	92.01
NEW MEXICO	1,643	1,080	424,119	13,416	31.63
NEW YORK	1,370	1,012	20,928	1,924	91.92
NORTH CAROLINA	3,121	2,264	45,597	3,220	70.61
NORTH DAKOTA	20,198	10,647	1,272,130	65,971	51.86
OHIO	34,825	19,408	237,068	42,540	179.44
OKLAHOMA	5,414	3,793	634,968	21,034	33.13
OREGON	3,660	2,040	440,788	28,022	63.57
PENNSYLVANIA	7,120	4,793	110,865	14,774	133.26
PUERTO RICO	3	3	495	25	51.21
RHODE ISLAND	*	*	*	*	*
SOUTH CAROLINA	2,573	1,513	55,750	2,249	40.34
SOUTH DAKOTA	28,403	13,379	1,128,921	100,806	89.29
TENNESSEE	5,088	3,480	125,305	12,094	96.52
TEXAS	18,768	13,511	2,774,397	102,161	36.82
UTAH	782	507	161,449	5,432	33.65
VERMONT	339	252	2,280	265	116.30
VIRGINIA	3,567	2,774	33,125	2,262	68.30
WASHINGTON	10,792	4,993	1,177,376	70,645	60.00
WEST VIRGINIA	488	405	7,757	500	64.52
WISCONSIN	13,506	8,647	202,149	30,813	152.43
WYOMING	738	471	205,565	4,989	24.27

1/ State in which land is located.

CRP ENROLLMENT BY STATE AS OF SEPTEMBER 2020
-----GENERAL SIGN-UP-----

STATE 1/	NUMBER OF CONTRACTS	NUMBER OF FARMS	ACRES	ANNUAL RENTAL PAYMENTS 2/ (\$1,000)	(\$/ACRE)
U. S.	164,056	118,533	13,180,476	684,454	51.93
ALABAMA	3,415	2,633	150,773	6,738	44.69
ALASKA	8	7	2,358	85	36.01
ARKANSAS	883	696	46,609	2,991	64.18
CALIFORNIA	147	108	39,723	2,172	54.69
COLORADO	8,386	4,740	1,615,009	54,230	33.58
DELAWARE	13	11	273	18	65.84
FLORIDA	438	378	17,268	815	47.20
GEORGIA	1,920	1,453	67,802	3,942	58.14
IDAHO	2,285	1,429	322,632	17,033	52.79
ILLINOIS	11,805	9,152	247,453	31,957	129.14
INDIANA	2,494	2,128	45,006	5,400	119.99
IOWA	17,031	13,059	466,845	70,158	150.28
KANSAS	19,620	13,512	1,555,918	63,704	40.94
KENTUCKY	2,067	1,564	60,853	7,074	116.24
LOUISIANA	592	487	38,644	2,149	55.60
MAINE	116	86	3,393	110	32.42
MARYLAND	87	79	1,285	112	87.26
MICHIGAN	1,360	1,143	32,749	2,937	89.68
MINNESOTA	10,191	7,785	326,734	24,727	75.68
MISSISSIPPI	6,084	4,870	311,537	17,265	55.42
MISSOURI	12,280	9,174	552,538	61,289	110.92
MONTANA	4,235	2,140	778,771	23,195	29.78
NEBRASKA	5,757	4,161	435,787	24,184	55.50
NEVADA	1	1	146	1	10.16
NEW MEXICO	1,226	865	270,950	10,252	37.84
NEW YORK	196	166	4,433	222	50.16
NORTH CAROLINA	1,351	1,099	25,224	1,331	52.78
NORTH DAKOTA	6,620	4,558	606,151	22,835	37.67
OHIO	1,807	1,572	36,076	3,450	95.64
OKLAHOMA	4,940	3,499	587,285	20,046	34.13
OREGON	1,821	1,115	352,530	21,930	62.21
PENNSYLVANIA	38	34	738	33	44.36
SOUTH CAROLINA	886	683	30,272	983	32.48
SOUTH DAKOTA	2,980	2,063	246,810	12,719	51.53
TENNESSEE	2,639	2,076	83,162	7,519	90.41
TEXAS	15,842	11,897	2,454,880	90,084	36.70
UTAH	764	494	160,309	5,409	33.74
VERMONT	1	1	7	0	64.00
VIRGINIA	474	413	10,019	424	42.31
WASHINGTON	6,033	3,126	936,290	52,078	55.62
WEST VIRGINIA	1	1	58	2	35.29
WISCONSIN	4,600	3,676	84,857	8,421	99.24
WYOMING	622	399	170,317	4,429	26.00

1/ State in which land is located.

2/ Approximates payments scheduled to be made October 2020.

CRP ENROLLMENT BY STATE AS OF SEPTEMBER 2020

----- TOTAL CONTINUOUS 1/ -----

STATE 1/	NUMBER OF CONTRACTS	NUMBER OF FARMS	ACRES	ANNUAL RENTAL PAYMENTS 2/ (\$1,000)	(\$/ACRE)
U. S.	422,205	243,981	7,827,305	1,098,361	140.32
ALABAMA	1,279	1,019	41,904	2,138	51.03
ALASKA	4	4	190	13	67.19
ARKANSAS	4,243	2,530	168,568	13,789	81.80
CALIFORNIA	7	7	1,267	38	30.25
COLORADO	1,303	823	133,161	8,740	65.63
CONNECTICUT	1	1	1	0	67.00
DELAWARE	285	171	3,297	484	146.88
FLORIDA	74	58	2,422	142	58.73
GEORGIA	4,339	3,063	137,437	9,290	67.59
HAWAII	31	20	1,280	62	48.58
IDAHO	1,233	789	188,028	10,878	57.85
ILLINOIS	63,384	37,219	593,828	134,070	225.77
INDIANA	29,597	16,925	168,530	34,772	206.33
IOWA	88,065	47,457	1,235,223	312,206	252.75
KANSAS	13,868	8,625	314,963	19,741	62.68
KENTUCKY	9,757	5,145	133,562	24,426	182.88
LOUISIANA	3,839	2,557	232,090	22,720	97.89
MAINE	122	94	2,245	155	69.06
MARYLAND	4,616	2,711	46,378	10,574	227.99
MASSACHUSETTS	3	3	10	1	101.00
MICHIGAN	7,382	4,308	76,202	12,175	159.77
MINNESOTA	44,281	24,459	695,912	111,763	160.60
MISSISSIPPI	8,105	5,504	277,196	27,031	97.52
MISSOURI	13,654	8,687	271,456	37,311	137.45
MONTANA	1,574	788	192,849	7,425	38.50
NEBRASKA	12,657	8,210	284,870	42,592	149.52
NEW HAMPSHIRE	1	1	4	0	63.00
NEW JERSEY	336	199	1,705	168	98.60
NEW MEXICO	255	193	58,769	1,989	33.85
NEW YORK	1,136	840	14,930	1,670	111.82
NORTH CAROLINA	1,752	1,189	19,824	1,878	94.75
NORTH DAKOTA	13,478	7,329	640,542	42,708	66.68
OHIO	32,904	18,479	196,826	39,008	198.19
OKLAHOMA	324	267	14,111	590	41.83
OREGON	1,809	1,140	71,186	5,836	81.98
PENNSYLVANIA	7,068	4,766	109,585	14,730	134.42
PUERTO RICO	3	3	495	25	51.21
RHODE ISLAND	1	1	28	2	74.00
SOUTH CAROLINA	1,684	937	25,377	1,263	49.79
SOUTH DAKOTA	24,923	12,305	746,561	85,847	114.99
TENNESSEE	2,415	1,697	39,165	4,532	115.70
TEXAS	2,831	1,898	289,364	11,740	40.57
UTAH	7	6	258	11	43.20
VERMONT	338	251	2,273	265	116.47
VIRGINIA	3,068	2,378	22,038	1,823	82.72
WASHINGTON	4,745	2,686	235,959	18,512	78.45
WEST VIRGINIA	457	386	5,560	467	84.06
WISCONSIN	8,878	5,788	116,655	22,376	191.81
WYOMING	89	65	13,220	383	28.96

1/ Includes Farmable Wetland enrollment.

2/ State in which land is located.

3/ Payments scheduled to be made October 2020. Includes annual incentive and maintenance allowance payments, but not one-time signing and practice incentive payments or payment reductions, such as for lands enrolled less than a full year and lands hayed or grazed.

CRP ENROLLMENT BY STATE AS OF SEPTEMBER 2020

-----CREP ONLY-----

STATE 1/	NUMBER OF CONTRACTS	NUMBER OF FARMS	ACRES	ANNUAL RENTAL PAYMENTS 2/ (\$1,000)	(\$/ACRE)
U.S.	55,207	37,575	925,694	154,771	167.19
ARKANSAS	12	10	483	56	116.19
COLORADO	256	186	35,770	4,742	132.56
DELAWARE	263	167	3,177	471	148.28
HAWAII	31	20	1,280	62	48.58
IDAHO	188	123	18,412	2,462	133.73
ILLINOIS	4,236	3,128	65,060	16,906	259.85
INDIANA	1,869	1,420	19,807	5,229	264.00
IOWA	125	122	3,662	1,125	307.27
KANSAS	128	91	23,146	3,023	130.60
KENTUCKY	1,899	961	63,172	12,270	194.24
LOUISIANA	728	539	47,802	3,794	79.36
MARYLAND	4,315	2,619	45,195	10,449	231.20
MICHIGAN	2,779	1,819	29,309	4,833	164.91
MINNESOTA	818	714	27,585	7,587	275.05
MISSISSIPPI	96	79	4,024	558	138.63
MISSOURI	809	582	24,514	2,489	101.55
MONTANA	118	52	11,925	765	64.15
NEBRASKA	1,069	885	49,221	6,796	138.07
NEW JERSEY	257	155	748	110	146.88
NEW YORK	968	711	11,467	1,473	128.49
NORTH CAROLINA	505	400	6,272	770	122.83
NORTH DAKOTA	16	12	1,060	51	48.43
OHIO	15,734	10,028	119,677	27,143	226.80
OKLAHOMA	67	56	582	37	63.38
OREGON	1,656	1,062	47,583	4,249	89.30
PENNSYLVANIA	7,051	4,751	109,561	14,729	134.43
SOUTH DAKOTA	1,007	620	79,361	8,510	107.24
VERMONT	329	249	2,240	263	117.30
VIRGINIA	2,583	2,092	18,472	1,577	85.35
WASHINGTON	1,154	948	13,630	3,634	266.60
WEST VIRGINIA	455	384	5,555	467	84.10
WISCONSIN	3,686	2,590	35,941	8,140	226.49

1/ State in which land is located.

2/ Payments scheduled to be made October 2020. Includes annual incentive and maintenance allowance payments, but not one-time signing and practice incentive payments or payment reductions, such as for lands enrolled less than a full year and lands hayed or grazed.



**CONSERVATION RESERVE ENHANCEMENT PROGRAM BY AGREEMENT
AS OF SEPTEMBER 2020**

AGREEMENT	NUMBER OF CONTRACTS	NUMBER OF FARMS	ACRES	ANNUAL RENTAL	
				(\$1,000)	(\$/A)
Arkansas I-Bayou Meto	1	1	29	4	138.61
Arkansas II-Cache River/Bayou De	6	4	443	51	115.54
Arkansas III-Illinois River	5	5	11	1	84.50
Colorado I-Republican River	155	115	25,612	3,097	120.94
Colorado II-High Plains	34	22	1,079	46	43.04
Colorado III-Rio Grande	67	49	9,079	1,598	175.99
Delaware	263	167	3,177	471	148.28
Hawaii	31	20	1,280	62	48.58
Idaho-Eastern Snake River Plain	188	123	18,412	2,462	133.73
Illinois	4,236	3,128	65,060	16,906	259.85
Indiana	1,869	1,420	19,807	5,229	264.00
Iowa	125	122	3,662	1,125	307.27
Kansas-Upper Arkansas River	128	91	23,146	3,023	130.60
Kentucky-Green River	1,899	961	63,172	12,270	194.24
Louisiana I-Lower Ouachita River	728	539	47,802	3,794	79.36
Maryland	4,315	2,619	45,195	10,449	231.20
Michigan	2,779	1,819	29,309	4,833	164.91
Minnesota	2	2	26	3	127.52
Minnesota II - Mississippi	211	185	3,785	610	161.24
Minnesota II - Missouri/Des Moin	103	92	2,627	401	152.49
Minnesota II - Red River	20	18	550	57	102.83
Minnesota Water Quality	482	423	20,597	6,517	316.38
Mississippi Delta	96	79	4,024	558	138.63
Missouri	809	582	24,514	2,489	101.55
Montana	118	52	11,925	765	64.15
Nebraska I-Central Basins Resour	541	479	4,272	565	132.35
Nebraska II-Platte Republican Re	528	406	44,949	6,230	138.61
New Jersey	257	155	748	110	146.88
New York I-New York City	170	135	1,672	187	111.66
New York II-Syracuse	15	7	55	6	116.15
New York III-State Wide	783	571	9,740	1,280	131.45
North Carolina	505	400	6,272	770	122.83
North Dakota	8	5	128	4	34.33
ND Riparian Project	8	7	932	47	50.36
Ohio I-Lake Erie	12,523	7,858	51,945	12,569	241.96
Ohio II-Upper Big Walnut Creek	22	14	49	8	156.73
Ohio III-Scioto River Basin	3,189	2,170	67,683	14,567	215.22
Oklahoma	67	56	582	37	63.38
Oregon	1,656	1,062	47,583	4,249	89.30
Pennsylvania I-Chesapeake Bay Wa	6,052	4,063	92,016	12,908	140.28
Pennsylvania II-Ohio River Basin	995	686	17,472	1,809	103.54
Pennsylvania III - Delaware Rive	4	3	73	12	166.02
South Dakota-James River	1,007	620	79,361	8,510	107.24
Vermont	329	249	2,240	263	117.30
Virginia I-Southern Rivers	1,282	1,048	7,457	610	81.80
Virginia II-Chesapeake Bay	1,301	1,053	11,016	967	87.76
Washington	1,154	948	13,630	3,634	266.60
West Virginia	455	385	5,555	467	84.10
Wisconsin	3,686	2,590	35,941	8,140	226.49
U.S.	55,207	37,608	925,694	154,771	167.19

CRP ENROLLMENT BY STATE AS OF SEPTEMBER 2020
----- CONTINUOUS NON-CREP 1/-----

STATE 1/	NUMBER OF CONTRACTS	NUMBER OF FARMS	ACRES	ANNUAL RENTAL PAYMENTS 2/ (\$1,000)	(\$/ACRE)
U. S.	352,242	208,276	6,510,092	882,283	135.53
ALABAMA	1,276	1,016	41,890	2,138	51.04
ALASKA	4	4	190	13	67.19
ARKANSAS	4,212	2,513	166,073	13,563	81.67
CALIFORNIA	7	7	1,267	38	30.25
COLORADO	1,046	649	97,230	3,990	41.03
CONNECTICUT	1	1	1	0	67.00
DELAWARE	22	15	120	13	109.83
FLORIDA	74	58	2,422	142	58.73
GEORGIA	4,339	3,063	137,437	9,290	67.59
IDAHO	1,044	669	169,610	8,416	49.62
ILLINOIS	59,044	35,238	526,949	116,663	221.39
INDIANA	27,643	16,013	147,970	29,405	198.72
IOWA	82,989	45,449	1,137,520	284,411	250.03
KANSAS	13,622	8,477	289,703	16,594	57.28
KENTUCKY	7,858	4,213	70,390	12,155	172.69
LOUISIANA	3,066	2,083	180,733	18,578	102.80
MAINE	122	94	2,245	155	69.06
MARYLAND	301	253	1,183	125	105.68
MASSACHUSETTS	3	3	10	1	101.00
MICHIGAN	4,597	2,966	46,829	7,335	156.64
MINNESOTA	41,257	23,359	629,240	97,632	155.16
MISSISSIPPI	7,918	5,389	261,794	25,363	96.88
MISSOURI	12,841	8,242	246,720	34,796	141.04
MONTANA	1,452	735	180,618	6,649	36.81
NEBRASKA	11,295	7,419	232,573	35,281	151.70
NEW HAMPSHIRE	1	1	4	0	63.00
NEW JERSEY	79	60	957	58	60.88
NEW MEXICO	255	193	58,769	1,989	33.85
NEW YORK	168	144	3,463	196	56.62
NORTH CAROLINA	1,245	867	13,495	1,102	81.68
NORTH DAKOTA	10,618	6,317	504,941	30,609	60.62
OHIO	17,118	11,116	76,808	11,818	153.86
OKLAHOMA	254	208	13,360	543	40.62
OREGON	153	109	23,603	1,587	67.23
PENNSYLVANIA	17	17	25	2	70.72
PUERTO RICO	3	3	495	25	51.21
RHODE ISLAND	1	1	28	2	74.00
SOUTH CAROLINA	1,684	937	25,377	1,263	49.79
SOUTH DAKOTA	20,006	10,624	569,525	64,335	112.96
TENNESSEE	2,415	1,697	39,165	4,532	115.70
TEXAS	2,831	1,898	289,364	11,740	40.57
UTAH	7	6	258	11	43.20
VERMONT	9	9	32	2	58.96
VIRGINIA	485	375	3,565	246	69.06
WASHINGTON	3,589	1,842	222,319	14,877	66.92
WEST VIRGINIA	2	2	5	0	38.00
WISCONSIN	5,180	3,857	80,595	14,215	176.38
WYOMING	89	65	13,220	383	28.96

1/ Farmable Wetland Program enrollment not included.

2/ State in which land is located.

3/ Payments scheduled to be made October 2020. Includes annual incentive and maintenance allowance payments, but not one-time signing and practice incentive payments or payment reductions, such as for lands enrolled less than a full year and lands hayed or grazed.

CRP ENROLLMENT BY STATE AS OF SEPTEMBER 2020
-----FARMABLE WETLAND PROGRAM-----

STATE 1/	NUMBER OF CONTRACTS	NUMBER OF FARMS	ACRES	ANNUAL RENTAL (\$1,000)	PAYMENTS 2/ (\$/ACRE)
U.S.	14,830	11,448	391,519	61,505	157.09
ALABAMA	3	3	14	1	36.59
ARKANSAS	19	13	2,012	170	84.40
COLORADO	1	1	160	8	52.45
IDAHO	1	1	6	0	78.55
ILLINOIS	105	96	1,818	506	278.11
INDIANA	85	78	752	139	184.46
IOWA	5,012	4,137	94,041	26,857	285.59
KANSAS	118	111	2,114	124	58.62
LOUISIANA	45	34	3,556	348	97.79
MICHIGAN	6	6	64	6	99.92
MINNESOTA	2,207	1,894	39,087	6,546	167.47
MISSISSIPPI	91	79	11,379	1,110	97.58
MISSOURI	4	3	222	25	113.39
MONTANA	7	7	306	14	46.71
NEBRASKA	295	261	3,075	516	167.63
NORTH CAROLINA	2	1	58	6	99.53
NORTH DAKOTA	2,844	1,825	134,541	12,048	89.55
OHIO	53	52	341	48	142.13
OKLAHOMA	3	3	169	11	62.99
SOUTH DAKOTA	3,915	2,829	97,675	13,002	133.11
WASHINGTON	2	2	10	1	110.54
WISCONSIN	12	12	119	20	171.02

1/ State in which land is located.

2/ Payments scheduled to be made October 2020. Includes annual incentive and maintenance allowance payments, but not one-time signing and practice incentive payments or payment reductions, such as for lands enrolled less than a full year and lands hayed or grazed.



CRP ENROLLMENT BY STATE AS OF SEPTEMBER 2020

-----GRASSLANDS SIGNUP-----

STATE 1/	NUMBER OF CONTRACTS	NUMBER OF FARMS	ACRES	ANNUAL RENTAL PAYMENTS 2/ (\$1,000)	(\$/ACRE)
U.S.	3,313	2,068	916,974	12,388	13.51
ALABAMA	30	21	2,031	33	16.39
ARKANSAS	1	1	60	1	15.00
CALIFORNIA	5	5	1,435	22	15.67
COLORADO	187	108	82,286	850	10.34
FLORIDA	7	5	378	7	19.78
GEORGIA	29	26	1,435	31	21.75
IDAHO	4	4	23,784	297	12.51
ILLINOIS	12	8	462	15	31.72
INDIANA	6	5	103	4	37.06
IOWA	63	52	3,120	117	37.35
KANSAS	121	87	25,124	273	10.88
KENTUCKY	81	47	3,450	86	25.07
LOUISIANA	8	6	1,382	26	19.14
MARYLAND	11	11	929	35	37.20
MICHIGAN	77	46	6,296	101	16.04
MINNESOTA	50	41	2,505	55	21.95
MISSISSIPPI	10	10	577	8	14.66
MISSOURI	36	30	1,776	46	25.93
MONTANA	187	50	48,303	615	12.74
NEBRASKA	991	615	333,424	4,439	13.31
NEW JERSEY	4	3	154	3	18.87
NEW MEXICO	162	113	94,400	1,175	12.45
NEW YORK	38	33	1,565	32	20.29
NORTH CAROLINA	18	13	548	10	18.34
NORTH DAKOTA	100	65	25,437	428	16.83
OHIO	114	90	4,166	82	19.67
OKLAHOMA	150	107	33,572	398	11.86
OREGON	30	23	17,071	256	14.98
PENNSYLVANIA	14	14	542	11	19.50
SOUTH CAROLINA	3	2	101	2	22.11
SOUTH DAKOTA	500	222	135,550	2,240	16.53
TENNESSEE	34	30	2,978	43	14.60
TEXAS	95	77	30,152	337	11.17
UTAH	11	10	882	11	13.03
VIRGINIA	25	18	1,068	16	14.52
WASHINGTON	14	7	5,126	56	10.84
WEST VIRGINIA	30	21	2,140	31	14.54
WISCONSIN	28	26	637	16	25.20
WYOMING	27	16	22,027	178	8.07

1/ State in which land is located.

2/ Includes 3,255 acres of pollinator habitat plantings (CP42).

3/ Payments scheduled to be made October 2020.

**State Acres for Wildlife Enhancement (SAFE)
Acres Enrolled as of September 2020**

State	Buffers	Wetlands	Trees	Longleaf	Grass	Total
ALABAMA	0	0	0	0	2,283	2,283
ARKANSAS	0	2,123	5,314	0	10,924	18,361
COLORADO	0	0	0	0	72,648	72,648
FLORIDA	0	0	9	0	0	9
GEORGIA	0	0	15,443	0	0	15,443
IDAHO	998	0	1	0	142,997	143,996
ILLINOIS	0	283	91	0	26,269	26,643
INDIANA	0	158	5,463	0	50,445	56,066
IOWA	0	787	1,003	0	283,989	285,778
KANSAS	0	9,049	0	0	193,945	202,994
KENTUCKY	0	0	119	0	14,496	14,615
LOUISIANA	0	0	261	0	215	477
MAINE	0	0	0	0	2,099	2,099
MICHIGAN	152	375	0	0	19,625	20,152
MINNESOTA	0	0	0	0	95,166	95,166
MISSISSIPPI	0	0	702	0	11,013	11,716
MISSOURI	7	0	0	0	56,265	56,273
MONTANA	0	235	0	0	81,535	81,770
NEBRASKA	0	1,172	0	0	124,337	125,509
NEW JERSEY	0	4	51	0	879	934
NEW MEXICO	0	0	0	0	2,600	2,600
NEW YORK	0	0	0	0	2,119	2,119
NORTH CAROLINA	0	0	0	0	724	724
NORTH DAKOTA	0	2,869	0	0	153,491	156,360
OHIO	0	78	22	0	36,813	36,913
OKLAHOMA	0	0	0	0	8,393	8,393
OREGON	0	0	0	0	5,450	5,450
SOUTH CAROLINA	0	0	0	0	1,063	1,063
SOUTH DAKOTA	0	904	0	0	157,369	158,273
TENNESSEE	0	39	56	0	9,501	9,597
TEXAS	0	0	0	0	177,426	177,426
VIRGINIA	0	0	10	500	0	510
WASHINGTON	601	0	0	0	110,730	111,331
WISCONSIN	0	77	0	0	31,518	31,594
WYOMING	0	0	0	0	9,675	9,675
	=====	=====	=====	=====	=====	=====
	1,758	18,153	28,545	500	1,896,004	1,944,960

SAFE PRACTICES

CP38A BUFFERS	CP15A, CP15B, CP21, CP22
CP38B WETLAND	CP9, CP23, CP23A, CP27, CP28, CP37
CP38C TREES	CP3, CP3A, CP16, CP17, CP25, CP31
CP38D LONGLEAF PINE	CP3A, CP36
CP38E GRASS	CP1, CP2, CP4D, CP8, CP12, CP18, CP24, CP25, CP33, CP42

Note: Includes contracts approved but not yet started.

**CRP CONTRACT EXPIRATIONS BY YEAR 1/
ACRES AS OF SEPTEMBER 2020**

STATE	2020	2021	2022	2023	2024	2025	2 026	2027+
ALABAMA	48,800	42,868	46,608	20,464	3,961	4,146	4,965	20,048
ALASKA	2,332	33	134	50	0	0	0	0
ARKANSAS	26,887	21,020	19,097	19,784	10,111	14,314	13,573	78,427
CALIFORNIA	11,032	8,573	16,376	3,244	0	0	718	1,484
COLORADO	693,198	296,409	459,124	159,822	8,740	3,011	62,936	129,165
CONNECTICUT	0	1	0	0	0	0	0	0
DELAWARE	412	312	141	252	105	104	284	1,854
FLORIDA	4,869	4,225	6,027	2,394	61	223	473	1,486
GEORGIA	21,297	25,457	52,514	17,752	12,119	18,686	8,476	45,503
HAWAII	0	0	0	0	147	2	329	803
IDAHO	113,758	115,617	139,796	50,497	21,436	12,759	20,281	28,904
ILLINOIS	138,046	67,918	67,242	95,544	34,431	72,007	122,983	142,955
INDIANA	34,447	18,532	20,899	25,019	9,408	18,614	27,879	38,486
INVALID CODE	0	3	0	0	0	0	0	0
IOWA	327,504	89,465	118,841	111,758	74,858	154,803	275,596	246,760
KANSAS	521,841	366,936	294,815	131,852	15,335	177,450	118,569	176,863
KENTUCKY	30,210	12,884	56,853	25,414	7,913	12,910	20,132	14,250
LOUISIANA	48,717	26,434	13,035	9,937	19,744	20,318	7,803	108,570
MAINE	1,418	1,085	1,016	2,065	1	10	25	15
MARYLAND	4,501	3,114	4,679	4,287	3,670	3,569	3,211	16,494
MASSACHUSETTS	0	0	0	0	0	0	0	10
MICHIGAN	20,545	9,093	9,458	13,009	4,204	4,328	12,395	35,157
MINNESOTA	165,139	61,570	104,955	65,999	42,834	55,320	83,380	350,729
MISSISSIPPI	106,388	77,154	99,515	40,355	14,416	25,384	34,371	163,612
MISSOURI	136,197	131,689	232,901	112,194	23,575	30,857	71,098	48,577
MONTANA	330,419	137,186	189,866	125,474	3,893	10,261	27,857	100,935
NEBRASKA	194,754	95,913	80,352	51,304	17,868	59,186	73,174	409,483
NEVADA	0	146	0	0	0	0	0	0
NEW HAMPSHIRE	4	0	0	0	0	0	0	0
NEW JERSEY	261	170	328	140	55	184	139	375
NEW MEXICO	19,547	113,728	124,782	28,020	3,806	6,241	14,229	94,400
NEW YORK	4,813	2,366	2,649	1,619	610	797	1,374	5,354
NORTH CAROLINA	14,233	9,101	8,042	3,954	1,285	2,042	2,466	3,705
NORTH DAKOTA	205,724	132,870	373,490	104,633	37,723	60,694	57,348	189,614
OHIO	49,695	26,483	23,112	20,647	8,479	14,188	16,119	59,060
OKLAHOMA	221,093	151,103	153,923	50,622	1,543	1,969	16,153	36,469
OREGON	91,578	85,318	82,109	57,944	1,644	3,150	40,151	52,211
PENNSYLVANIA	15,804	12,310	19,064	6,067	6,360	6,013	5,359	31,174
PUERTO RICO	0	0	0	60	435	0	0	0
RHODE ISLAND	0	0	0	0	28	0	0	0
SOUTH CAROLINA	14,499	6,490	12,110	4,465	2,041	3,835	1,600	8,096
SOUTH DAKOTA	188,901	110,701	137,972	78,356	55,557	71,157	81,026	295,877
TENNESSEE	29,335	20,447	15,272	23,059	1,991	4,538	14,662	8,858
TEXAS	902,974	538,675	715,564	296,772	23,552	56,334	89,996	118,594
UTAH	102,291	27,065	23,954	5,984	195	0	1,060	900
VERMONT	101	268	320	205	256	154	86	823
VIRGINIA	5,128	3,642	4,732	2,773	940	2,540	3,125	9,175
WASHINGTON	371,800	95,002	212,724	193,548	9,249	31,538	167,023	64,910
WEST VIRGINIA	760	834	652	300	452	338	555	3,682
WISCONSIN	40,339	18,160	17,661	19,671	6,928	12,137	20,147	48,800
WYOMING	89,117	32,678	41,881	8,128	151	179	10,116	22,879
=====	=====	=====	=====	=====	=====	=====	=====	=====
	5,350,706	3,001,046	4,004,587	1,995,441	492,109	976,289	1,533,241	3,215,529

1/ Includes general and continuous sign-up acreage.
Note: Contracts expire at the end of the fiscal year, September 30.

**CONSERVATION PRACTICES INSTALLED ON CRP (ACRES)
CUMULATIVE, AS OF SEPTEMBER 2020**

STATE	GRASS PLANTINGS		TREE PLANTINGS			WILDLIFE HABITAT (CP4D) 2/	WILDLIFE CORRIDORS (CP4B)	FIELD WINDBREAKS (CP5)
	INTROD. (CP1)	NATIVE (CP2)	SOFTWOODS (CP3)	LONGLEAF PINE (CP3A) 1/	HARDWOODS (CP3A)			
ALABAMA	13,672	2,816	84,464	8,046	2,707	4,266	20	0
ALASKA	1,100	0	0	0	0	0	0	0
ARKANSAS	3,559	3,137	15,135	0	12,333	1,539	53	0
CALIFORNIA	19,658	157	14	0	0	9,651	0	0
COLORADO	68,941	848,099	1	0	0	280,804	0	847
CONNECTICUT	0	0	0	0	0	0	0	0
DELAWARE	15	23	0	0	2,082	516	0	0
FLORIDA	26	108	11,522	677	98	330	0	0
GEORGIA	707	32	45,457	6,336	1,425	1,354	4	0
HAWAII	0	0	0	0	13	0	0	0
IDAHO	203,682	40,193	5,315	0	26	55,835	10	41
ILLINOIS	180,684	42,739	1,362	0	31,321	78,574	21	1,826
INDIANA	16,792	11,524	261	0	11,617	5,744	23	1,064
IOWA	227,627	124,498	554	0	15,991	92,297	234	5,597
KANSAS	12,783	621,132	16	0	297	319,166	463	918
KENTUCKY	30,215	18,966	190	0	2,786	232	8	0
LOUISIANA	715	1,140	17,206	4,915	12,672	32,353	0	0
MAINE	2,230	0	90	0	0	38	0	0
MARYLAND	6,149	1,797	531	0	357	1,051	3	0
MASSACHUSETTS	0	0	0	0	0	0	0	0
MICHIGAN	14,486	8,159	2,615	0	1,836	6,605	179	1,554
MINNESOTA	61,546	39,415	6,827	0	12,255	70,741	97	5,033
MISSISSIPPI	21,410	2,153	189,514	3,466	30,282	2,293	36	0
MISSOURI	425,986	123,314	350	0	12,632	2,007	0	25
MONTANA	375,946	209,949	26	0	5	9,624	84	42
NEBRASKA	27,727	236,391	99	0	315	35,283	13	21,023
NEVADA	130	0	0	0	0	0	0	0
NEW HAMPSHIRE	0	0	0	0	0	0	0	0
NEW JERSEY	0	0	0	0	0	0	0	2
NEW MEXICO	52,406	261,497	0	0	0	140	0	0
NEW YORK	4,573	372	301	0	153	390	0	0
NORTH CAROLINA	930	94	13,912	2,845	3,527	628	0	8
NORTH DAKOTA	129,773	13,458	62	0	355	198,209	0	2,408
OHIO	10,933	44,261	1,500	0	4,813	7,986	40	3,106
OKLAHOMA	115,375	286,866	0	0	37	884	0	31
OREGON	200,661	59,379	859	0	39	8,381	1	0
PENNSYLVANIA	61,048	21,524	37	0	238	3,426	0	0
PUERTO RICO	0	0	0	0	0	0	0	0
RHODE ISLAND	0	0	0	0	0	0	0	0
SOUTH CAROLINA	556	182	16,746	1,322	174	599	0	9
SOUTH DAKOTA	48,454	63,546	6	0	14	36,612	0	17,047
TENNESSEE	31,022	20,251	18,829	0	4,574	2,144	8	0
TEXAS	271,484	1,598,359	1,149	0	10	12,309	743	0
UTAH	68,958	13,900	0	0	0	1,805	0	0
VERMONT	7	0	0	0	0	0	0	0
VIRGINIA	1,813	689	5,261	0	35	220	0	0
WASHINGTON	262,321	497,346	2,418	0	0	106,058	48	6
WEST VIRGINIA	187	0	0	0	7	0	0	0
WISCONSIN	54,286	21,473	6,569	0	15,456	2,716	110	88
WYOMING	97,007	1,620	1	0	0	1,320	0	104
	=====	=====	=====	=====	=====	=====	=====	=====
	3,127,584	5,240,559	449,200	27,608	180,484	1,394,128	2,197	60,780

1/ See also CP36 (p. 25).

2/ Seedings that meet multiple seasonal requirements for wildlife of local or regional concern.

**CONSERVATION PRACTICES INSTALLED ON CRP (ACRES)
CUMULATIVE, AS OF SEPTEMBER 2020, CON'T**

STATE	DIVERSIONS & EROSION CONTROL STRUCT. 1/	GRASS WATERWAYS (CP8)	SHALLOW WATER FOR WILDLIFE (CP9)	EXISTING GRASS (CP10)	EXISTING TREES (CP11)	WILDLIFE FOOD PLOTS (CP12)	CONTOUR GRASS STRIPS (CP15)	SHELTER- BELTS (CP16)
ALABAMA	0	8	107	9,498	26,063	742	0	0
ALASKA	0	0	0	1,258	0	0	0	0
ARKANSAS	0	5	461	3,774	7,376	271	0	0
CALIFORNIA	0	0	0	8,851	0	1	0	0
COLORADO	0	357	12	450,272	22	95	9	1,949
CONNECTICUT	0	0	0	0	0	0	0	0
DELAWARE	0	1	191	77	0	3	0	0
FLORIDA	0	0	0	0	4,486	21	0	0
GEORGIA	0	21	13	684	11,998	93	0	0
HAWAII	0	0	0	0	0	0	0	0
IDAHO	0	0	23	49,696	291	67	37	16
ILLINOIS	7	30,067	3,945	24,444	3,503	3,621	760	91
INDIANA	0	17,338	854	3,901	1,317	296	20	14
IOWA	0	34,330	9,957	47,791	1,239	3,788	9,470	1,726
KANSAS	0	6,563	860	75,637	54	2,971	2,386	403
KENTUCKY	0	4,992	1,728	2,131	272	408	30	0
LOUISIANA	0	2	442	369	5,079	520	0	0
MAINE	0	43	0	823	212	0	0	0
MARYLAND	0	197	948	164	108	12	1	0
MASSACHUSETTS	0	0	0	0	0	0	0	0
MICHIGAN	38	384	1,131	3,805	1,256	568	0	11
MINNESOTA	0	3,141	135	35,904	3,988	2,868	704	2,641
MISSISSIPPI	0	20	450	8,919	66,442	1,655	17	0
MISSOURI	1	1,691	1,624	41,684	1,040	2,748	532	47
MONTANA	0	58	11	163,687	113	628	0	79
NEBRASKA	0	1,070	126	55,244	268	379	231	908
NEVADA	0	0	0	0	0	0	0	0
NEW HAMPSHIRE	0	0	0	0	0	0	0	0
NEW JERSEY	0	173	0	0	0	0	1	0
NEW MEXICO	0	0	0	11,791	0	0	0	0
NEW YORK	0	26	0	2,441	81	32	0	0
NORTH CAROLINA	0	193	147	452	6,597	10	0	5
NORTH DAKOTA	0	74	0	121,459	102	1,755	1	2,530
OHIO	0	11,350	453	3,547	783	305	13	59
OKLAHOMA	0	124	53	167,044	84	665	0	21
OREGON	0	16	0	57,591	281	100	0	0
PENNSYLVANIA	0	180	31	2,779	5	508	28	0
PUERTO RICO	0	0	0	0	0	0	60	0
RHODE ISLAND	0	0	0	0	0	0	0	0
SOUTH CAROLINA	0	14	9	898	9,865	80	0	0
SOUTH DAKOTA	0	1,345	41	66,444	58	2,297	25	8,920
TENNESSEE	0	171	57	10,597	5,036	251	20	0
TEXAS	0	1,073	83	613,658	1,095	2,505	71	0
UTAH	0	6	0	74,919	0	8	18	0
VERMONT	0	15	0	0	0	0	0	0
VIRGINIA	0	73	52	501	1,449	16	2	0
WASHINGTON	0	321	50	93,729	423	707	41,541	8
WEST VIRGINIA	0	0	0	0	0	0	0	0
WISCONSIN	1	1,241	1,591	16,074	3,860	847	401	3
WYOMING	0	0	0	70,936	12	15	0	2
	=====	=====	=====	=====	=====	=====	=====	=====
	47	116,684	25,586	2,303,472	164,858	31,854	56,376	19,434

1/ Includes CP6, CP7, CP26, and CP34.

**CONSERVATION PRACTICES INSTALLED ON CRP (ACRES)
CUMULATIVE, AS OF SEPTEMBER 2020, CON'T**

STATE	LIVING SNOW FENCES (CP17)	SALINITY REDUCING VEGETATION (CP18)	FILTER-STRIPS (CP21)	RIPARIAN BUFFERS 1/ (CP22)	WETLAND RESTORATION			CROSS WIND TRAP STRIPS (CP24)
					(CP23) 2/	FLOODPLAIN (CP23) 3/	NON-FLOODPLAIN (CP23A) 3/	
ALABAMA	0	0	249	21,854	0	5	0	0
ALASKA	0	0	0	50	0	0	0	0
ARKANSAS	0	0	4,339	49,783	22	43,522	26,321	0
CALIFORNIA	0	0	0	268	572	0	0	0
COLORADO	23	7	60	418	26	0	1,524	0
CONNECTICUT	0	0	0	1	0	0	0	0
DELAWARE	0	0	416	57	0	112	74	0
FLORIDA	0	0	0	0	0	0	0	0
GEORGIA	0	0	368	630	380	23	0	0
HAWAII	0	0	0	1,267	0	0	0	0
IDAHO	0	0	670	2,685	0	375	25	0
ILLINOIS	38	1	97,512	93,859	702	34,855	12,033	0
INDIANA	0	0	41,974	4,563	943	3,917	8,128	0
IOWA	585	0	179,478	39,536	2,221	119,046	10,887	0
KANSAS	35	521	17,966	2,108	378	3,649	5,170	46
KENTUCKY	0	0	15,218	13,414	0	82	137	0
LOUISIANA	0	0	260	3,472	101	67,048	70,791	0
MAINE	0	0	55	29	0	0	0	0
MARYLAND	0	0	21,765	10,110	9	1,900	339	0
MASSACHUSETTS	0	0	10	0	0	0	0	0
MICHIGAN	11	0	21,015	1,362	204	3,874	13,520	0
MINNESOTA	2,181	4,195	108,335	22,795	26,644	29,174	321,561	0
MISSISSIPPI	0	0	4,203	151,391	0	20,853	1,356	0
MISSOURI	0	0	20,508	18,638	83	18,930	1,554	0
MONTANA	188	62,434	177	1,818	510	655	661	0
NEBRASKA	92	472	12,766	1,275	158	9,332	4,932	0
NEVADA	0	0	0	0	0	0	0	0
NEW HAMPSHIRE	0	0	0	4	0	0	0	0
NEW JERSEY	0	0	309	272	0	0	0	0
NEW MEXICO	0	0	0	560	0	0	0	0
NEW YORK	0	0	244	6,074	2	55	3	0
NORTH CAROLINA	0	0	651	3,147	0	677	0	0
NORTH DAKOTA	436	89,933	7,032	223	130,573	4,568	59,728	0
OHIO	0	0	66,668	6,509	803	4,915	7,252	0
OKLAHOMA	0	1,471	462	792	78	293	1,310	0
OREGON	0	0	1,446	30,496	0	152	115	0
PENNSYLVANIA	0	0	656	17,574	0	573	0	0
PUERTO RICO	0	0	0	94	0	0	0	0
RHODE ISLAND	0	0	0	28	0	0	0	0
SOUTH CAROLINA	0	0	869	8,248	0	172	0	0
SOUTH DAKOTA	490	16,720	9,358	4,074	24,328	36,682	125,790	0
TENNESSEE	0	0	3,778	4,386	43	631	0	0
TEXAS	0	406	544	11,328	5,332	959	2,610	0
UTAH	0	0	0	17	0	0	0	0
VERMONT	0	0	120	2,137	0	0	0	0
VIRGINIA	0	0	2,110	17,155	0	141	0	0
WASHINGTON	0	0	31,167	17,571	15	42	5	0
WEST VIRGINIA	0	0	563	4,860	0	0	0	0
WISCONSIN	10	0	18,948	5,971	830	2,816	1,231	0
WYOMING	0	0	0	1,719	0	0	0	0
	=====	=====	=====	=====	=====	=====	=====	=====
	4,090	176,161	692,269	584,623	194,955	410,029	677,057	46

1/ Includes cropland and marginal pasture.

2/ Acres enrolled under general sign-up and CREP through 2003

3/ Acres enrolled under continuous CREP and non-CREP sign-up after 2003.

**CONSERVATION PRACTICES INSTALLED ON CRP (ACRES)
CUMULATIVE, AS OF SEPTEMBER 2020, CON'T**

STATE	RARE AND DECLINING HABITAT (CP25)	FARMABLE WETLAND PROGRAM 1/		MARGINAL PASTURE BUFFERS		BOTTOMLAND HARDWOOD TREES (CP31)	UPLAND BIRD HABITAT BUFFERS (CP33)
		WETLAND (CP27)	BUFFER (CP28)	WILDLIFE (CP29)	WETLAND (CP30)		
ALABAMA	393	0	0	368	0	1,058	604
ALASKA	0	0	0	0	140	0	0
ARKANSAS	0	0	0	272	2,706	16,964	3,176
CALIFORNIA	0	0	0	0	0	0	0
COLORADO	1,709	34	127	58	32	0	1,286
CONNECTICUT	0	0	0	0	0	0	0
DELAWARE	0	0	0	0	0	0	0
FLORIDA	0	0	0	0	0	0	0
GEORGIA	0	0	0	26	0	0	391
HAWAII	0	0	0	0	0	0	0
IDAHO	79	4	2	103	53	0	0
ILLINOIS	507	658	1,129	169	20	5,718	58,208
INDIANA	1,939	265	468	88	41	9,639	9,294
IOWA	139,160	27,433	66,185	4,699	1,139	3,562	23,697
KANSAS	561,931	726	1,381	0	0	207	24,712
KENTUCKY	31,829	0	0	46,324	0	594	5,549
LOUISIANA	0	335	0	0	176	49,285	80
MAINE	0	0	0	5	11	0	0
MARYLAND	596	0	0	1,038	154	0	399
MASSACHUSETTS	0	0	0	0	0	0	0
MICHIGAN	35	19	45	4	224	0	443
MINNESOTA	81,948	12,356	25,589	140	4,951	836	485
MISSISSIPPI	0	40	157	33	37	59,596	1,376
MISSOURI	21,855	0	0	775	1,443	1,933	24,029
MONTANA	54,533	100	206	0	1	0	404
NEBRASKA	145,928	1,369	1,706	547	285	9	9,500
NEVADA	0	0	0	0	0	0	0
NEW HAMPSHIRE	0	0	0	0	0	0	0
NEW JERSEY	0	0	0	0	0	0	0
NEW MEXICO	0	0	0	0	0	0	0
NEW YORK	0	0	0	1,330	1,142	2	0
NORTH CAROLINA	0	0	0	24	0	55	3,162
NORTH DAKOTA	10,744	26,187	59,594	35	0	0	0
OHIO	4,105	78	193	2,907	106	39	10,037
OKLAHOMA	16,274	47	122	0	0	442	416
OREGON	41,663	0	0	16,205	529	0	0
PENNSYLVANIA	0	0	0	974	420	0	324
PUERTO RICO	0	0	0	341	0	0	0
RHODE ISLAND	0	0	0	0	0	0	0
SOUTH CAROLINA	0	0	0	28	59	0	1,035
SOUTH DAKOTA	13,134	27,086	57,277	3,788	18,509	0	1,264
TENNESSEE	0	0	0	71	0	2,878	3,147
TEXAS	0	0	0	1,165	2	0	30,578
UTAH	0	0	0	0	0	0	0
VERMONT	0	0	0	0	1	0	0
VIRGINIA	0	0	0	719	0	0	742
WASHINGTON	1,162	2	8	695	538	0	1,553
WEST VIRGINIA	0	0	0	0	0	0	0
WISCONSIN	12,047	54	65	807	22	0	208
WYOMING	0	0	0	1,107	0	0	0
	=====	=====	=====	=====	=====	=====	=====
	1,141,570	96,793	214,254	84,845	32,743	152,818	216,101

1/ For more FWP see page 25.

**CONSERVATION PRACTICES INSTALLED ON CRP (ACRES)
CUMULATIVE, AS OF SEPTEMBER 2020, CON'T**

STATE	LONGLEAF PINE (CP36)	DUCK NESTING HABITAT (CP37)	STATE ACRES FOR WILDLIFE ENHANCEMENT (CP38)	FARMABLE WETLAND PROGRAM			POLLINATOR HABITAT 2/ (CP42)	PRAIRIE SRTIPS (CP43)
				CONSTRUC- TED WETLANDS (CP39) 1/	AQUACUL- TURE WETLANDS (CP40)	FLOODED PRAIRIE WETLANDS (CP41) 1/		
ALABAMA	13,419	0	2,283	0	14	0	85	0
ALASKA	0	0	0	0	0	0	0	0
ARKANSAS	0	0	18,361	0	2,012	0	49	0
CALIFORNIA	0	0	0	0	0	0	1,819	0
COLORADO	0	0	72,648	0	0	0	19,166	0
CONNECTICUT	0	0	0	0	0	0	0	0
DELAWARE	0	0	0	0	0	0	2	0
FLORIDA	2,413	0	9	0	0	0	0	0
GEORGIA	119,918	0	15,411	0	0	0	6	0
HAWAII	0	0	0	0	0	0	0	0
IDAHO	0	0	143,996	0	0	0	7,436	0
ILLINOIS	0	0	26,641	32	0	0	105,946	279
INDIANA	0	0	56,024	19	0	0	5,383	89
IOWA	0	2,518	285,614	298	0	125	219,559	1,275
KANSAS	0	0	202,994	7	0	0	5,601	86
KENTUCKY	0	0	14,615	0	0	0	4,770	0
LOUISIANA	34	0	477	1	3,221	0	22	0
MAINE	0	0	2,099	0	0	0	0	0
MARYLAND	0	0	0	0	0	0	34	0
MASSACHUSETTS	0	0	0	0	0	0	0	0
MICHIGAN	0	0	20,081	0	0	0	5,483	3
MINNESOTA	0	24,610	95,158	89	0	1,052	15,140	85
MISSISSIPPI	134	0	11,716	0	11,182	0	0	0
MISSOURI	0	0	56,001	0	222	0	44,297	0
MONTANA	0	2,871	81,770	0	0	0	5,455	0
NEBRASKA	0	0	125,522	0	0	0	28,764	67
NEVADA	0	0	0	0	0	0	16	0
NEW HAMPSHIRE	0	0	0	0	0	0	0	0
NEW JERSEY	0	0	934	0	0	0	14	0
NEW MEXICO	0	0	2,600	0	0	0	857	0
NEW YORK	0	0	2,117	0	0	0	44	0
NORTH CAROLINA	7,186	0	724	0	58	0	20	0
NORTH DAKOTA	0	177,752	156,002	0	13	48,747	4,938	0
OHIO	0	0	36,915	69	0	0	3,267	1
OKLAHOMA	0	0	8,393	0	0	0	114	0
OREGON	0	0	5,450	0	0	0	353	0
PENNSYLVANIA	0	0	0	0	0	0	8	0
PUERTO RICO	0	0	0	0	0	0	0	0
RHODE ISLAND	0	0	0	0	0	0	0	0
SOUTH CAROLINA	13,717	0	1,058	0	0	0	0	0
SOUTH DAKOTA	0	234,029	158,270	14	0	13,297	4,589	19
TENNESSEE	0	0	9,597	0	0	0	4,837	0
TEXAS	0	0	177,426	0	0	0	11,422	0
UTAH	0	0	0	0	0	0	937	0
VERMONT	0	0	0	0	0	0	0	0
VIRGINIA	378	0	510	0	0	0	194	0
WASHINGTON	0	0	111,331	0	0	0	3,139	0
WEST VIRGINIA	0	0	0	0	0	0	0	0
WISCONSIN	0	0	31,585	0	0	0	2,214	3
WYOMING	0	0	9,675	0	0	0	229	0
=====	=====	=====	=====	=====	=====	=====	=====	=====
	157,200	441,781	1,944,007	529	16,721	63,221	506,211	1,907

1/ Includes buffers.

2/ Does not include about 40,000 acres from signup 39 before CP42 was implemented.

**CONSERVATION PRACTICES INSTALLED ON CRP (ACRES)
CUMULATIVE, AS OF SEPTEMBER 2020, CON'T**

STATE	GRASSLANDS 1/		TOTAL CRP
	INTRODUCED GRASSES (CP87)	NATIVE GRASSES (CP88)	
ALABAMA	1,800	166	194,707
ALASKA	0	0	2,549
ARKANSAS	0	60	215,237
CALIFORNIA	847	588	42,426
COLORADO	1,467	80,463	1,830,455
CONNECTICUT	0	0	1
DELAWARE	0	0	3,570
FLORIDA	378	0	20,067
GEORGIA	1,431	0	206,674
HAWAII	0	0	1,280
IDAHO	0	23,784	534,443
ILLINOIS	450	3	841,743
INDIANA	54	47	213,638
INVALID CODE	0	0	3
IOWA	2,256	793	1,705,185
KANSAS	618	24,215	1,896,004
KENTUCKY	3,321	51	197,865
LOUISIANA	1,217	165	272,117
MAINE	0	0	5,638
MARYLAND	894	35	48,592
MASSACHUSETTS	0	0	10
MICHIGAN	6,296	0	115,247
MINNESOTA	752	1,722	1,025,150
MISSISSIPPI	420	156	589,310
MISSOURI	955	783	825,770
MONTANA	4,773	43,114	1,019,923
NEBRASKA	21,095	311,184	1,054,081
NEVADA	0	0	146
NEW HAMPSHIRE	0	0	4
NEW JERSEY	154	0	1,859
NEW MEXICO	1,944	92,324	424,119
NEW YORK	1,543	2	20,928
NORTH CAROLINA	538	7	45,597
NORTH DAKOTA	2,966	22,471	1,272,130
OHIO	4,007	61	237,068
OKLAHOMA	1,938	31,631	634,968
OREGON	1,140	15,930	440,788
PENNSYLVANIA	425	110	110,865
PUERTO RICO	0	0	495
RHODE ISLAND	0	0	28
SOUTH CAROLINA	101	0	55,750
SOUTH DAKOTA	6,407	128,971	1,128,921
TENNESSEE	1,957	1,022	125,305
TEXAS	1,615	28,472	2,774,397
UTAH	85	797	161,449
VERMONT	0	0	2,280
VIRGINIA	985	80	33,125
WASHINGTON	276	4,850	1,177,376
WEST VIRGINIA	2,140	0	7,757
WISCONSIN	597	23	202,149
WYOMING	1,751	20,067	205,565
=====	=====	=====	=====
	79,592	834,146	21,924,755

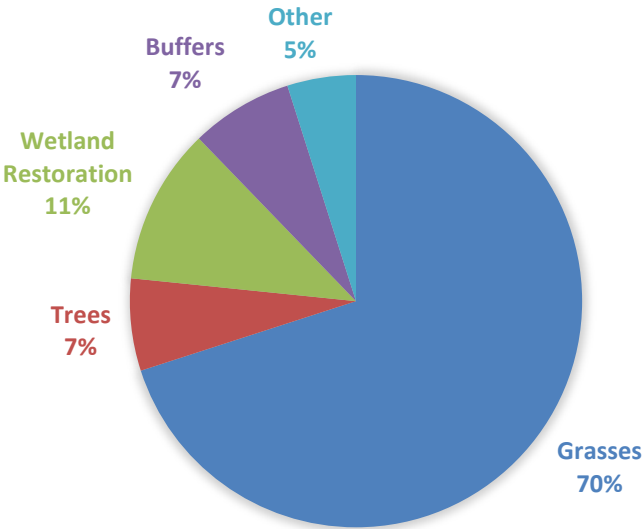
1/ Not including 3,255 acres of pollinator habitat.

**CONSERVATION PRACTICES INSTALLED ON CRP (ACRES)
CUMULATIVE, AS OF SEPTEMBER 2020**

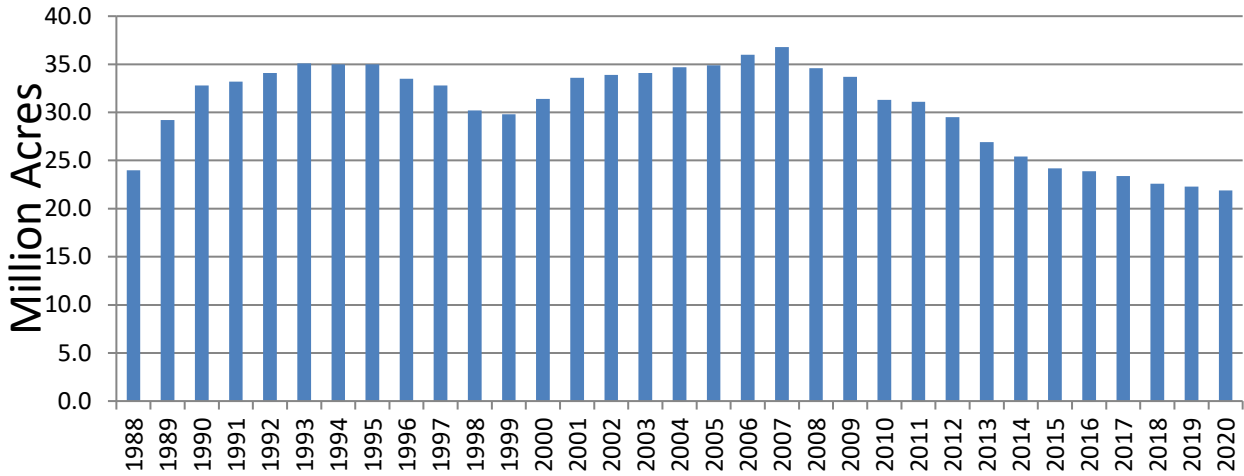
PRACTICE NAME	GENERAL	NON-CREP	CREP	FARMABLE	GRASS-	TOTAL
				WETLAND	LAND	
CP1 INTROD. GRASSES AND LEGUMES	2,599,928	447,007	80,650	0	0	3,127,584
CP2 NATIVE GRASSES	4,831,456	206,480	202,624	0	0	5,240,559
CP3 SOFTWOOD TREES (NOT LONGLEAF)	429,661	18,144	1,395	0	0	449,200
CP3A LONGLEAF PINES	27,608	0	0	0	0	27,608
CP3A HARDWOOD TREES	150,128	18,785	11,571	0	0	180,484
CP4D PERMANENT WILDLIFE H BITAT	1,287,578	21,724	84,826	0	0	1,394,128
CP4B WILDLIFE HABITAT CORRIDOR	2,148	49	0	0	0	2,197
CP5 FIELD WINDBREAK	56	56,936	3,778	0	0	60,770
CP8 GRASS WATERWAYS	0	116,172	500	0	0	116,672
CP9 SHALLOW WATER AREAS FOR WILDLIFE	0	23,996	1,579	0	0	25,576
CP10 EXISTING GRASSES AND LEGUMES 3/	2,293,536	4,449	5,487	0	0	2,303,472
CP11 EXISTING TREES 4/	164,441	0	417	0	0	164,858
CP12 WILDLIFE FOOD PLOT	29,818	856	1,179	0	0	31,854
CP15 CONTOUR GRASS STRIP	0	56,138	238	0	0	56,376
CP16 SHELTERBELT	106	19,293	33	0	0	19,432
CP17 LIVING SNOW FENCE	0	4,090	0	0	0	4,090
CP18 SALINITY REDUCING VEGETATION	0	176,065	0	0	0	176,065
CP21 FILTER STRIPS (GRASS)	0	560,792	131,211	0	0	692,003
CP22 RIPARIAN BUFFER	0	445,372	139,235	0	0	584,606
CP23 WETLAND RESTORATION	194,955	0	0	0	0	194,955
CP23 WETLAND REST. (FLOODPLAIN)	0	370,970	39,011	48	0	410,029
CP23A WETLAND REST. (NON-FLOODPLAIN)	0	614,713	62,345	0	0	677,057
CP24 CROSS WIND TRAP STRIP	0	46	0	0	0	46
CP25 RARE AND DECLINING HABITAT	,108,132	11,450	21,988	0	0	1,141,570
CP27 FARMABLE WETLAND (WETLAND)	0	0	0	96,793	0	96,793
CP28 FARMABLE WETLAND (UPLAND) 5/	0	0	0	214,254	0	214,254
CP29 WILDLIFE HABITAT BUFFER (MARG PAST)	0	15,633	69,212	0	0	84,845
CP30 WETLAND BUFFER (MARG PAST)	0	29,682	3,061	0	0	32,743
CP31 BOTTOMLAND HARDWOOD TREES	0	130,899	21,919	0	0	152,818
CP33 UPLAND BIRD HABITAT BUFFER	0	210,901	5,176	0	0	216,077
CP34 FLOOD CONTROL STRUCTURE	0	0	69	0	0	69
CP36 LONGLEAF PINE	0	157,200	0	0	0	157,200
CP37 DUCK NESTING HABITAT	0	403,961	37,714	0	0	441,675
CP38 STATE ACRES FOR WILDLIFE ENHANCEME	0	1,945,257	0	0	0	1,945,257
CP39 FWP--CONSTRUCTED WETLAND	0	0	0	529	0	529
CP40 FWP--AQUACULTURE WETLAND	0	0	0	16,721	0	16,721
CP41 FWP--FLOODED PRAIRIE WETLAND	0	0	0	63,221	0	63,221
CP42 POLLINATOR HABITAT	60,849	441,204	439	0	3,236	505,728
CP43 PRAIRIE STRIPS	0	1,907	0	0	0	1,907
CP87 INTRODUCED GRASSES (GRASSLANDS)	0	0	0	0	79,592	79,592
CP88 NATIVE GRASSES (GRASSLANDS)	0	0	0	0	834,146	834,146
	=====	=====	=====	=====	=====	=====
	13,180,476	6,510,092	925,694	391,519	916,974	21,924,755

1/ Includes both introduced and native grasses. 2/ Includes both hardwood and softwood trees.
3/ Does not include about 40,000 acres from sign up 39 before CP42 was implemented.

CRP PRACTICES BY ACRES



CRP Enrollment Over Time (Cumulative at End of Each Fiscal Year)



CRP ENROLLMENT AND OUTLAY HISTORY

Fiscal Year	Cumulative Enrollment (Million Acres)	Rental Payments \$Mil.	Cost-Share Payments \$Mil.	Incentive Payments \$Mil.	Total Financial \$Mil.
1986	2.0	\$0	\$0	\$0	\$0
1987	15.4	\$410	\$246	\$0	\$656
1988	24.0	\$756	\$282	\$0	\$1,038
1989	29.2	\$1,149	\$181	\$0	\$1,330
1990	32.8	\$1,390	\$118	\$0	\$1,508
1991	33.2	\$1,590	\$41	\$0	\$1,631
1992	34.1	\$1,613	\$39	\$0	\$1,652
1993	35.1	\$1,652	\$32	\$0	\$1,684
1994	35.0	\$1,722	\$14	\$0	\$1,736
1995	35.0	\$1,729	\$4	\$0	\$1,733
1996	33.5	\$1,721	\$1	\$0	\$1,722
1997	32.8	\$1,677	\$8	\$0	\$1,685
1998	30.2	\$1,597	\$96	\$0	\$1,693
1999	29.8	\$1,320	\$115	\$0	\$1,435
2000	31.4	\$1,332	\$133	\$10	\$1,475
2001	33.6	\$1,396	\$150	\$78	\$1,624
2002	33.9	\$1,520	\$143	\$114	\$1,777
2003	34.1	\$1,575	\$99	\$100	\$1,774
2004	34.7	\$1,588	\$117	\$84	\$1,789
2005	34.9	\$1,620	\$93	\$75	\$1,788
2006	36.0	\$1,657	\$100	\$84	\$1,841
2007	36.8	\$1,718	\$90	\$58	\$1,866
2008	34.6	\$1,774	\$84	\$69	\$1,927
2009	33.7	\$1,708	\$75	\$72	\$1,855
2010	31.3	\$1,699	\$67	\$70	\$1,836
2011	31.1	\$1,621	\$99	\$72	\$1,792
2012	29.5	\$1,648	\$100	\$57	\$1,805
2013	26.9	\$1,602	\$84	\$37	\$1,723
2014	25.4	\$1,607	\$79	\$31	\$1,718
2015	24.2	\$1,594	\$69	\$79	\$1,742
2016	23.9	\$1,589	\$106	\$134	\$1,829
2017	23.4	\$1,671	\$112	\$84	\$1,867
2018	22.6	\$1,778	\$107	\$84	\$1,941
2019	22.3	\$1,824	\$52	\$23	\$1,899
2020	21.9	\$1,796	\$36	\$12	\$1,844
Total	--	\$52,645	\$3,172	\$1,399	\$57,216



Photo Credits

USDA

Applewood Seeds

Digital Collegian

Blogspot.com

USDA